

HAPPINESS STARTS IN YOUR KITCHEN

Since its inception in 1996, FOTILE has carved a niched in the industry of being the No 1 high-end kitchen appliances brand in China, specializes in developing built-in kitchen appliances like hoods, hobs, ovens, combi ovens, microwave ovens, steam ovens and sink dishwashers.

We have the largest R&D center in the world, covering an area of **8000sqm**. With technology, innovation design and performance as the key factors in Fotile manufacturing, we have achieved **13000+** patents in product and **3500+**** in invention, bringing innovative and good quality product to over **17 millions** of families around the world. FOTILE commitments to excellence not only bringing satisfaction to our customers, we have won a numerous international accolade namely RedDots design awards, IF Product Design Award that uplifting the industry standard of designs and product innovations.

At FOTILE, our business is built on the foundation of product innovation and creating kitchen appliances that are functional, stylish and family oriented. That is why FOTILE is constantly inventing, designing and creating extraordinary products while maintaining its reputation as a leading kitchen expert that puts families at the first place.

Marking a remarkable milestone, FOTILE has launched its first largest kitchen appliances gallery named the "Fotile Style," located at TaoJiang road, Shanghai, in year 2012. This gallery showcasing the brand's most prestigious kitchen appliances. A 'futuristic corner' is introduced in this gallery, allows visitors to take a glimpse into some of FOTILE'S most innovative technology.

With over 20 years of experience in servicing Malaysian customers, FOTILE Marketing Sdn.Bhd as the sole distributor of FOTILE kitchen appliances in Malaysia, has the expertise to offer functional and stylish kitchen appliances that suited to Asian cooking.

Today, FOTILE Malaysia enjoys its position as a reputable premium kitchenware brand in Malaysia with a strong following of happy and satisfied customers. We strive to innovate our product and service, providing a full spectrum of cooking solutions that caters to every Malaysian kitchen need.

- Dusseldorf, Germany; Osaka, Japan; Ningbo, China ; three global centers
- Revise international standards* for extractor hoods


* IEC 60335-2-31: Household and Similar Electrical Appliances-Safety-Part


2-31: Particular Requirements for Range Hoods and Other Cooking Fume Extractors

** Data as of Aug 31st, 2024

 www.fotile.com.my

  FOTILEMalaysia

 +603-8602 9289 (HQ)

 016-207 8978


FOTILE

THE **ZERO** HERO
Introducing
HydroJet Technology

BEYOND CLEAN

**Your All-in-One
Clean, Dry, Sterilize, Store Solution!**





Zero — Hero!

FOTILE recognizes that users need more than just a dishwasher; they seek a comprehensive kitchen cleaning solution. Our patented High-Pressure HydroJet Technology, Smart Space Management System, Automated Drainage System, and Durable Storage, deliver a seamless experience. We strive for "Zero-Dirt, Zero-Odour, and Zero-Waste," ensuring "Zero-Worry" for our users. The FOTILE dishwasher goes beyond basic cleanliness to provide a holistic cleaning and storage solution, making it the ultimate all-in-one cleaning hero for your home.

FOTILE has innovatively combined a sink with dishwashing and fruit and vegetable purifying, creating the world's first 3-in-1 sink dishwasher. This design provides a seamless experience, allowing users to wash without bending down. It can be installed on a dry kitchen island, efficiently meeting all cleaning needs for every meal.



Beyond Dishwashing: Purifier For Fruits & Vegetables

It employs High-Pressure HydroJet Technology to efficiently remove pesticide residues from fruits and vegetables, and eliminate dirt from seafood. This appliance addresses both post-meal cleanup and pre-meal ingredient preparation, making it an essential tool for any household.



Space-Saving Sink Replacement

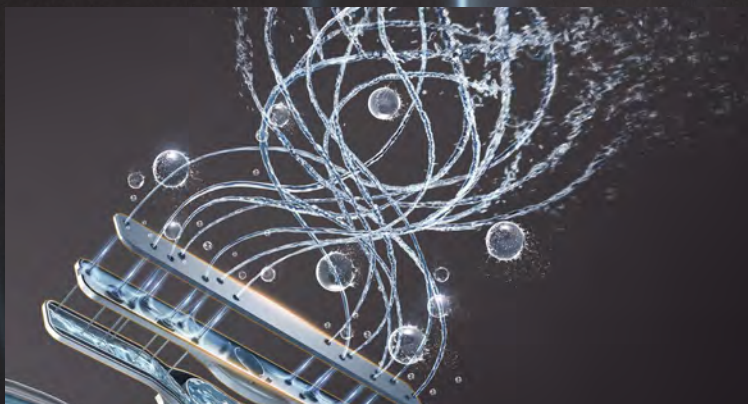
It replaces your existing kitchen sink without the need for extra installation space. With operations at the countertop level, it eliminates the need to bend down for dish placement, aligning with Asian kitchen habits.



FOTILE was not only the pioneer of the sink dishwasher but also developed numerous unique technologies and features for built-in dishwashers. With various capacities of 12, 15, and 18 place settings, we aim to deliver an extraordinary ZERO-HERO experience to our users. Additionally, the built-in dishwasher can pair with the sink dishwasher to create a dual cleaning space, catering to the diverse needs of various kitchens.

ZERO-DIRT

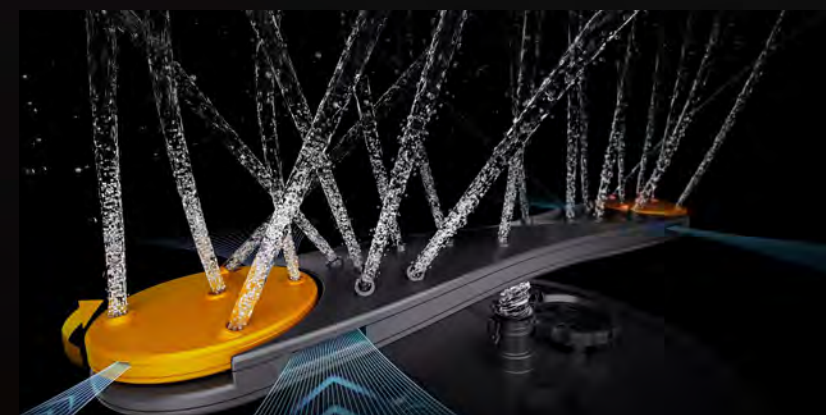
Supported by deep cleaning, powerful performance, and comprehensive coverage, this system offers a complete solution for achieving effective cleanliness.



The Secret to Deep Cleaning: High-Pressure HydroJet Technology

What distinguishes FOTILE dishwashers in cleanliness is our ever-evolving High-Pressure HydroJet Technology. Inspired by submarine cleaning techniques, this system generates hundreds of billions of cavitation bubbles in the water, accelerating the speed and momentum of the water flow. This effectively removes stubborn grease and stains, leaving your dishes shining like new.





Powerful Brushless Direct-Current Inverter (BLDC)

Equipped with a high-quality BLDC motor, it reaches speeds of up to 3000 r/min for robust power output. With dual air pressure boosting and water vapour acceleration, it generates powerful water pressure, achieving a static pressure of up to 50,000 Pa—comparable to a fire hydrant.



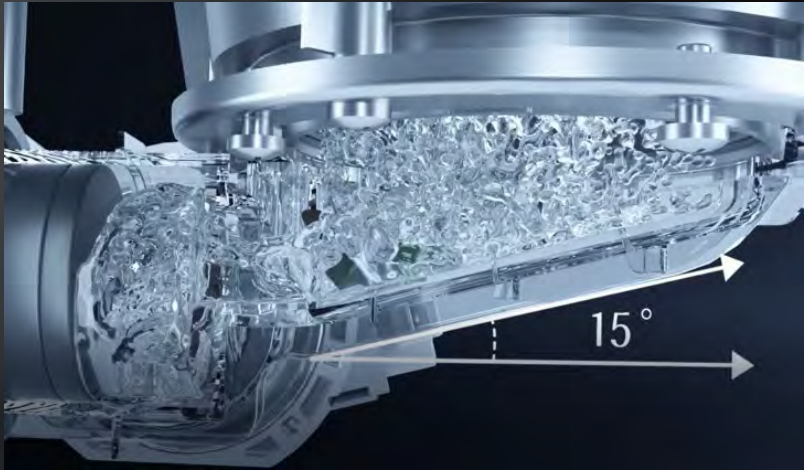
Innovative Orbit System Spray Arms

Traditional dishwashers with standard spray arms offer limited coverage, leaving dishes unclean if not properly placed. FOTILE's innovative Orbit System Spray Arms technology doubles the coverage by incorporating rotational spray patterns at both ends. This design ensures thorough cleaning of all surfaces of dishes and cookware, regardless of their orientation, without leaving any blind spots.



ZERO-ODOUR

FOTILE's patented Automated Drainage System thoroughly removes all leftover debris and water, keeping dishwashers odourless and clean, which helps avoid bacterial growth.



Patented Automated Drainage System for Odour-Free Kitchen

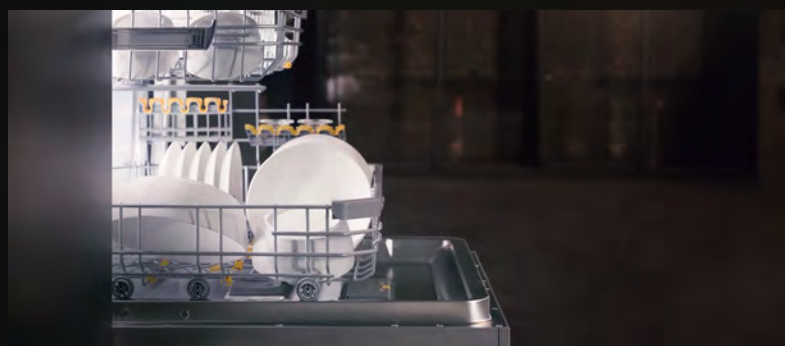
Water drainage is tilted for 15° and automatically closes its valve after washing to prevent backflow of sewage, maintaining a clean, odour-free dishwasher.



Smart Space Management System

Say goodbye to wait for a full load, which can lead to bacteria and wasted resources. Our innovative design divides the chamber, enabling you to wash fewer dishes in a single compartment. This conserves water, electricity, and time, facilitating on-demand cleaning without concerns about waste or odors.

* Applicable in dishwasher model BD2BV01



Massive Capacity with Flexible Rack Arrangement

FOTILE's expertly designed dish rack offers dedicated spaces on both upper and lower levels, accommodating larger items while providing designated areas for smaller utensils and specialized sections for irregular items like knives and spatulas.



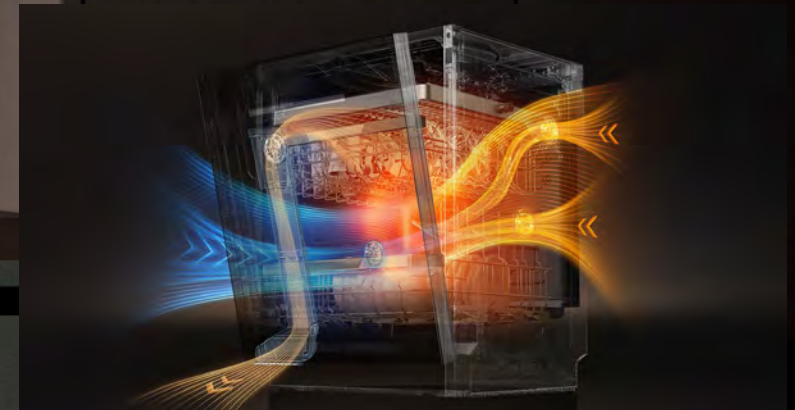
ZERO-WASTE

With Smart Space Management System and Flexible Rack Arrangement, we optimize dishwasher space utilization, enhancing flexibility and delivering an optimal cleaning experience.



ZERO-WORRY

Advanced drying, sterilization, and smart ventilation technologies are employed to effectively tackle dish storage issues after washing, ensuring a worry-free and hygienic experience.



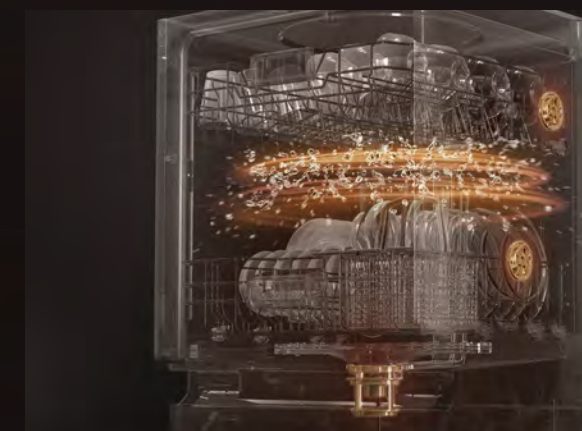
Innovative Drying System

FOTILE dishwashers utilize an active and passive trio or dual drying system. Active hot air drying accelerates moisture removal, while passive ventilation through the open door ensures thorough airflow. This combination provides comprehensive drying, leaving the interior fresh and dry for worry-free storage.



Sterilize up to 99.9999%

FOTILE dishwashers feature a built-in high-efficiency rapid-heating plate that generates high-temperature steam, achieving a sterilization rate of up to 99.9999%. Some of our models also offer a sterilization drying mode for enhanced disinfection, providing you with both a dishwasher and a built-in sterilizer.



168 Hours Storage System

FOTILE dishwashers feature dual temperature and humidity sensors that monitor conditions and activate appropriate programs to remove excess moisture, ensuring dryness. Different models offer varying storage duration, with the maximum duration reaching up to 168 hours.



Innovative Design

Elegant product design with proven effectiveness



Knock Twice to Open, Seamless Integration

Knock-to-open automatic door function achieves a seamless built-in aesthetic by eliminating handles. This design enhances kitchen elegance while reducing the risk of collisions.

* Applicable in dishwasher model BD3B-G6



Automatic Detergent Dispensing System, 15 Washes Supply

Eliminate the hassle of adding detergent before each wash. The liquid detergent dispenser provides enough detergent for 15 washes; simply fill it up and forget it until the system alerts you when it's empty.

* Applicable in dishwasher model BD3B-G6



Smart Projection, Monitor Washing Cycle

Project the remaining washing time directly onto the floor, enabling users to easily monitor the cleaning progress. When the machine operates with the door closed, the projection light automatically initiates the countdown display.

* Applicable in dishwasher model BD3B-G6

30mm

Adjustable height for taller cabinets

If the cabinet height is tall, the dishwasher can be elevated by adjusting its legs accordingly.

*Applicable in dishwasher models BD2BV01 and BD3B-G6

For Dishwashers:

1. The outlet (drainage) pipe & water inlet must be near to dishwasher.
2. The drain hose hook from the ground must be at least 300mm ~ 500mm.
3. Cabinet cut-out size must be ready before installation.
4. Prepare a 13A power point inside the cabinet.
5. Inlet water pressure should be in the range of 0.14-1M Pa.
6. The plug of dishwasher should be fitted directly into a socket, do not use an extension socket.
7. Do not place any objects to block the ventilation outlet at bottom front of dishwasher.
8. If there is a base of cabinet, it must be strong enough to withstand more than 60Kg.
9. Recommended to prepare skirting board.
10. For BD3B-G6 Dishwasher, it must be installed according to the Figure 1.1.

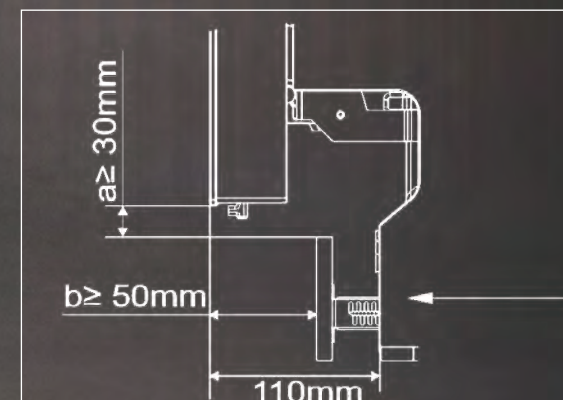


Figure 1.1

For Sink Dishwasher:

1. The outlet (drainage) pipe must be $\leq 350\text{mm}$ from the ground, pipe diameter $\geq 50\text{mm}$.
2. Table top cut-out size must be ready before installation.
3. Prepare a 13A power point inside the cabinet.
4. Table top must be strong enough to withstand $\geq 80\text{kg}$.
5. *Installation type: Top mount only.

Your Kitchen Helper To Complete Your Kitchen Needs

Built-in Dishwasher



BD2B-G5

Volume size | **12** place settings

Advantages



High-Pressure
HydroJet Technology



Dual Ventilation
Drying



75°C High-temperature
Sterilization



96 Hours
Storage System



Automated
Drainage System

Built-in Dishwasher



BD2B-V01

Volume size | **15** place settings

Advantages



High-Pressure
HydroJet Technology



Dual Ventilation
Drying



75°C High-temperature
Sterilization



96 Hours
Storage System



Smart Space
Management System



Automated
Drainage System

Built-in Dishwasher



BD3B-G6

Volume size | **18** place settings

Advantages



High-Pressure
HydroJet Technology 3.0



Trio Ventilation
Drying



100°C
Steam Sterilization



168 Hours
Storage System



Smart Projection



Knock Twice
to Open



Automated
Drainage System

Sink Dishwasher



SD2F-P6

Volume size | **7** place settings

Advantages



High-Pressure
HydroJet Technology



Triple drying
technology



75°C High-temperature
Sterilization



96 Hours
Storage System



Purify Fruits
& Vegetables



no need to
bend down

Specifications



Model	BD2B-G5	BD2B-V01	BD3B-G6	SD2F-P6
Product Dimensions (W*H*D mm)	595 x 605 x 500	598 X 775 x 570	598 x 775 x 570	985 x 505 x 550
Place Settings(Sets)	12	15	18	7
High-Pressure HydroJet Technology (Pa)	34,000	40,000	50,000	40,000
Sterilization	99.9999%	99.99%	99.9999%	99.99%
Cleaning Program	6 + 3	6 + 4	6 + 6	4 + 4
Cleaning Storage (Hours)	96	96	168	96
Special Features	/	Smart Space Management System	Knock Twice To Open AutoDose+,Automatic Detergent Dispensing System Smart Projection	Purify Fruits & Vegetables No Need Bend Down
Dishwashing Time Consumption (Min)	30 - 250	45 - 255	30 - 300	15 - 180
Dishwashing Water Consumption (L)	8.6 - 15	11 - 23	13 - 18	6.2 - 12
Dishwashing Temperature (°C)	45 - 75	45 - 75	45 - 75	52 - 75
Household water pressure	0.14MPa - 1MPa	0.14MPa - 1MPa	0.14MPa - 1MPa	0.14MPa - 1MPa
Rated Voltage	220-240V 50/60Hz	220-240V 50/60Hz	220-240V 50/60Hz	220-240V 50/60Hz
Consumption (w)	1900	1900	1980	1950

Installation Diagram

